

TRAFFIC[®]

TENDER DOCUMENT

TimberStats

Tender Reference Number: 523_2023_1

Contents

Contents.....	2
Introductory Notes	4
Overview	4
Introduction	4
Background	4
Assumptions.....	4
Key Elements to Include.....	5
Selection Criteria.....	5
Tender Process.....	6
Contact Details.....	7
Conditions	7
Terms of Reference.....	8
Functionality	8
Visualisations	9
Discrepancies of reported values or weight/volume where feasible.....	9
Analysis of Reported Volume (m ³).....	10
Analysis of Reported Weight (kg)	10
HS Codes	11
Global map	11
Other Functionality	11
Timber-related trade quotas and restrictions	11
Other potential functionality	11
Annex 1	12
All two-, four- and six-digit HS codes starting with 44.....	12

Introductory Notes

Overview

TRAFFIC is a leading non-governmental organisation working to ensure that trade in wild species is legal and sustainable, for the benefit of the planet and people. TRAFFIC's head office is based in the UK and located at the David Attenborough building, Cambridge.

Introduction

This Tender Document has been created to provide an overview of the requirements, goals and standards that TRAFFIC has with regard to the design of a publicly accessible tool that visualises certain aspects of UN Comtrade data. This tool will be known externally as TimberStats.

Background

TimberStats will be a simple, browser-based analytical tool designed to visualise and measure the differences between timber commodities reported by importers and exporters through UN Comtrade data.

The tool will initially focus on the timber commodity trade between and from the following four focal countries:

- Cameroon
- Republic of Congo
- Viet Nam
- China
- With each other and to the rest of the world

N.B. Cameroon and the Republic of Congo are considered the primary exporting countries, with Viet Nam and China as importers. However, China and Viet Nam have their own domestic timber trade and may export timber commodities to other countries, including to each other.

The aim of the TimberStats tool will be to provide Customs and potentially any enforcement officials in these four countries with the ability to search for, measure and visualise “discrepancies”, i.e. the difference between what has officially been reported as exported from one country and what has officially been reported as imported by another. This will provide these countries with the first step in investigating the causes of these discrepancies.

N.B. UN Comtrade considers a 10-15% difference between export and import values as normal due to the differences in valuation and costs associated and reported by the data.

Assumptions

The sections in this document that cover the deployment and implementation of the portals should be seen as a guide. Flexibility is permitted to allow for different development processes. However, suppliers are encouraged to seek clarifications before proceeding based on an assumption. All assumptions made must be fully documented within the tender proposal.

Key Elements to Include

- Company profile or CV including details of skills and expertise in relation to services required,
- Demonstration of an understanding of the services being requested and the resources you have available
- A detailed tender proposal including your proposed solutions to the services required
- Cost breakdown analysis split between the separate phases of development. Any liability for sales taxes payable outside of the UK rests with the consultant.
- Any assumptions you have made
- Customer references or reviews of your services
- Equality and Environmental Sustainability policies
- Evidence that:
 - a) It is registered by a national registrar of companies.
 - b) It is registered for declaration and payment of tax in accordance with national legislation

Selection Criteria

Submissions of Tender will be evaluated on the following selection criteria:

Technical Offer:

- Proposal demonstrates a clear understanding of the brief
- Proposal clearly details how key deliverables will be achieved
- Proposal includes realistic project timeline
- Proposal includes an estimated cost breakdown
- Proposal includes any assumptions used, possible constraints and challenges the supplier is aware of that could impact on development
- Proposal includes summary of how the outputs of the initiative will be evaluated

Skills and Experience:

- Experience of working with international and environmental organisation and Non-Government Organisation (NGO) is an advantage
- Proven track record in implementation of similar types of technical and technological tasks for previous customers within the past 5 years
- Proven track record in analysis of UN Comtrade data is an advantage
- Proven track record with developing user-friendly and/or progressive web applications and dashboard developments
- Proven track record of work with and understanding of timber industry, conservation issues and information and global timber policy is an advantage

Criteria	Weighting
Technical Offer	35%
Skills and Experience	35%
Financial Offer	30%

Tender Process

Tender Timetable

TRAFFIC reserves the right to amend these dates if required.

Task	Description	Timeline
Tender Release	Tender made available online	7 August 2023
Submission of Tenders	Full responses must be received by close of business	4 September 2023
Evaluation of Responses	TRAFFIC will evaluate supplier proposals and if necessary seek clarification from suppliers	18 September 2023
Supplier Confirmation	TRAFFIC will inform selected supplier that they have been successful	25 September 2023
Transition Period	The selected supplier will commence detailed planning of their solution prior to the contract commencement	25 – 9 October 2023
Contract Commencement	Full development will begin. Deadlines for specific project milestones will be agreed the supplier following a successful application and agreement.	10 October 2023

Submission of Tender

The deadline for submissions of offers is **4 September 2023**. An electronic copy of the submission must be emailed to fred.ellis@traffic.org and katie.mabbutt@traffic.org, and acknowledgement of receipt will be sent back to the sender.

The detail specified in each supplier response may be specified in any future contract, therefore suppliers should ensure their responses are authorised at the appropriate level that would enable them, should their offer be successful, to become the subject of a binding contract.

Contact Details

Fred Ellis

David Attenborough Building
Cambridge
CB2 3QZ

Email: fred.ellis@traffic.org

Conditions

Any company or individual responding to this tender request (hereinafter referred to as the Supplier) acknowledges that a response to this tender does not commit TRAFFIC to any course of action resulting from its receipt and that the following conditions are to be observed:

- TRAFFIC may, at its discretion, reject any tender and is not bound to give any reason for doing so.
- TRAFFIC may select a Supplier based upon its own unique set of criteria.
- TRAFFIC is not bound to disclose details of such criteria and may at any time alter the criteria to reflect the changing needs of the business.
- TRAFFIC may terminate the tender process at any time.
- TRAFFIC reserves the right to amend any part of this tender request if required.

Nothing contained in this tender request or any other communication made between TRAFFIC and the Supplier shall constitute an agreement, contract or representation between TRAFFIC and the Supplier or any other party. Receipt of this tender request by the Supplier does not imply the existence of a contract or commitment by or with TRAFFIC for any purpose and Suppliers must note that this tender request may not result in the award of any business. It does not purport to contain all of the information that a Supplier may require. While TRAFFIC has taken all reasonable steps to ensure that, as at the date of this document, the facts that are contained in this tender request are true and accurate in all material respects, TRAFFIC does not make any representation or warranty as to the accuracy or completeness or otherwise of this tender, or the reasonableness of any assumptions on which this document may be based.

It is the responsibility of the Supplier to obtain for itself at its own expense all additional information necessary for the preparation of its response to this tender. Suppliers are responsible for all costs, liabilities and expenses that may be incurred in the preparation of its response to this tender and TRAFFIC will not be held liable for any costs incurred by the Supplier regardless of the outcome or whether a contract is awarded.

Terms of Reference

Functionality

TimberStats will consist of a browser-based dashboard of visualisations in the form of charts/graphs based on UN Comtrade data relating to timber commodities in the four focus countries, with the potential addition of a map and/or a data table.

The contents of these visualisations will be editable using filters relating to the countries involved (exporter and importer – restricted to the four focal countries, and to the rest of the world or sub-set thereafter as a grouping), the dates (start and end month/year), and the specific commodities (by “HS code”, a series of two-, four-, and six-digit codes that the UN Comtrade database uses to designate traded commodities) with the ability to select multiple HS codes from a dropdown list, possibly filtered between four and six-digit codes. See Annex 1 for a list of all relevant HS codes.

Other functionality could include, where feasible:

- The creation of “alerts”
- The ability to export data
- The ability to save searches, views, etc.

More information about this functionality is given in the following sections of this document. Two draft representations of how the tool might look are shown below. Please note that the presented images and charts are merely suggestions. Visual representations are provided as a rough overview of possible design structures and they are subject to change, do not display the full range of visuals (colours/icons/images/etc.) available, do not reflect the final intended design of the tool, and only constitute a portion of the final required components of the tool.

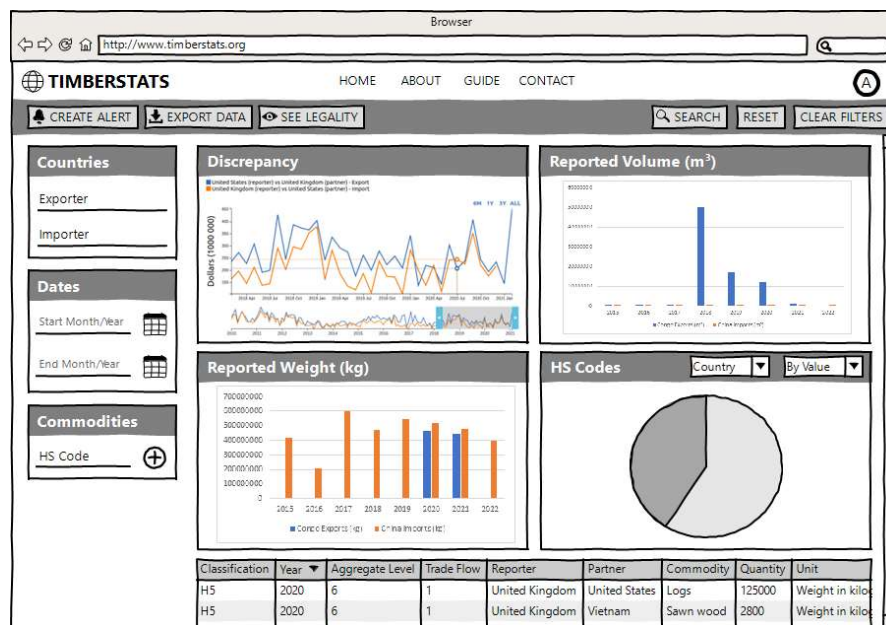


Figure 1. A layout with filters on the left and the inclusion of a data table

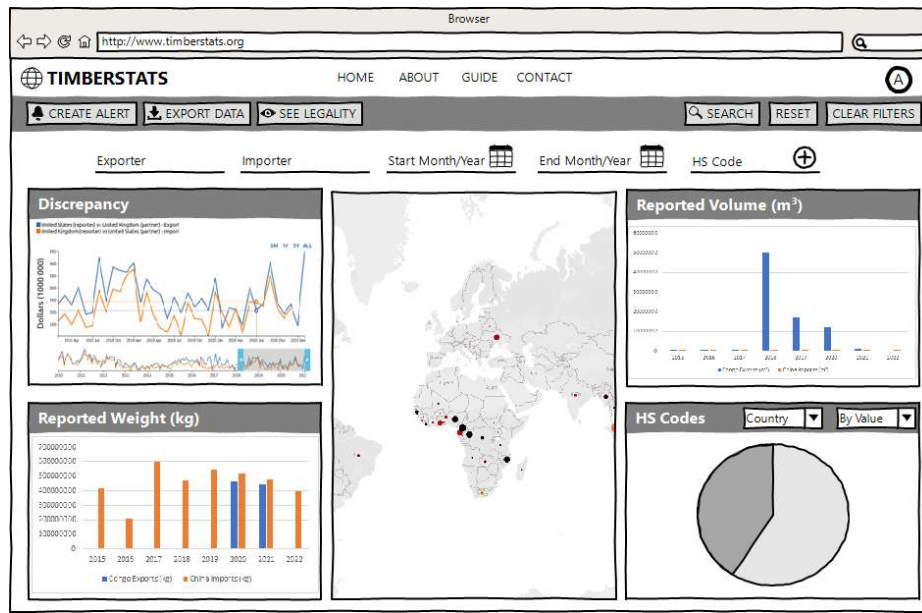


Figure 2. A layout with filters at the top and the inclusion of a map

Visualisations

Various visualisations will be required in the tool. These are listed below:

Discrepancies of reported values or weight/volume where feasible

A line graph (or similar).

- Displays export vs import reported UN Comtrade data using monthly values (Please note that Figure 3 below uses annual values).
- Displays and highlights the discrepancy value gap between export vs import data (see the “a” value as an example in Figure 3) and displays the date when hovering with cursor.

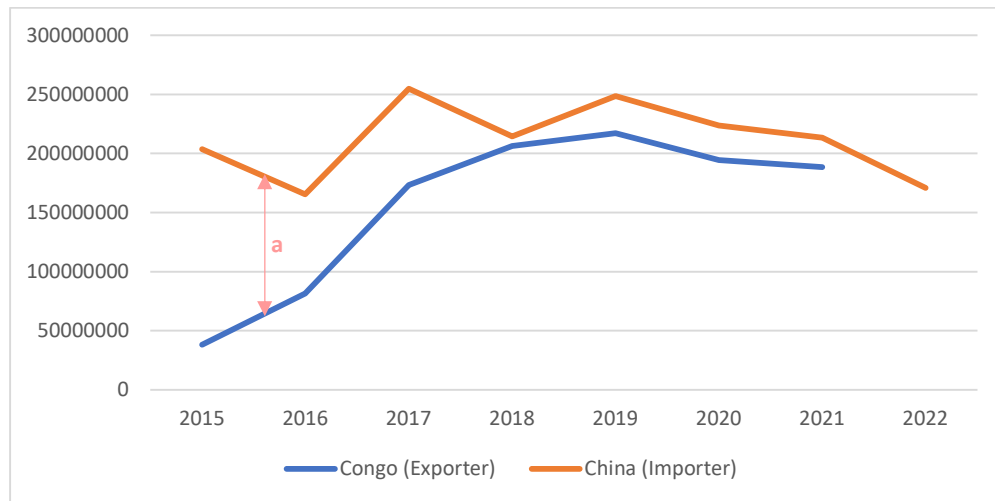


Figure 3. Discrepancy between Republic of Congo exports vs China imports of timber by value (USD)

Analysis of Reported Volume (m³)

A bar chart.

- Displays volumes in m³ reported by the selected exporting country alongside volumes reported by the selected importing country.
- Caveat explaining differences in reporting preferences and lack of reported data. An example of this lack of data can be seen in *Figure 4* below.

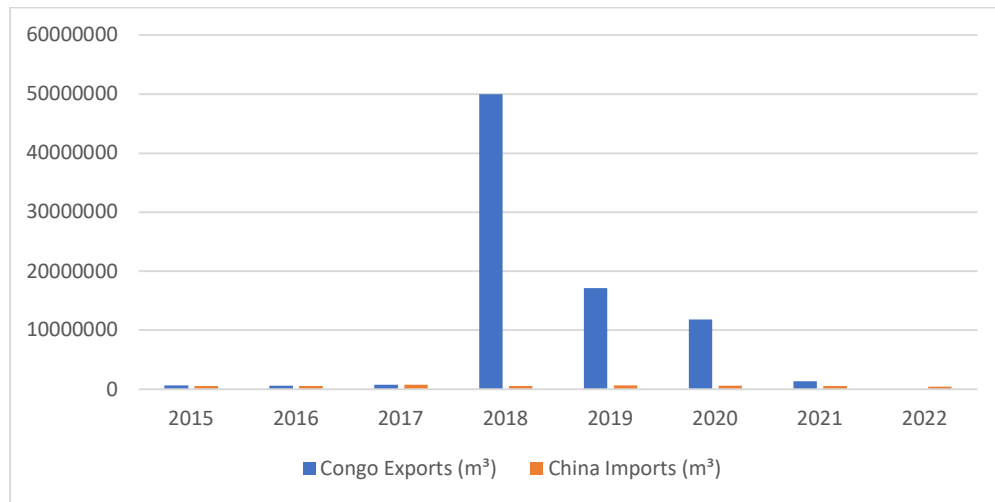


Figure 4. Reported Congolese Exports vs Chinese Imports by volume (m³)

Analysis of Reported Weight (kg)

A bar chart.

- Displays weights in kg reported by the selected exporting country alongside weights reported by the selected importing country.
- Caveat explaining differences in reporting preferences and lack of reported data. An example of this lack of data can be seen in *Figure 5* below.

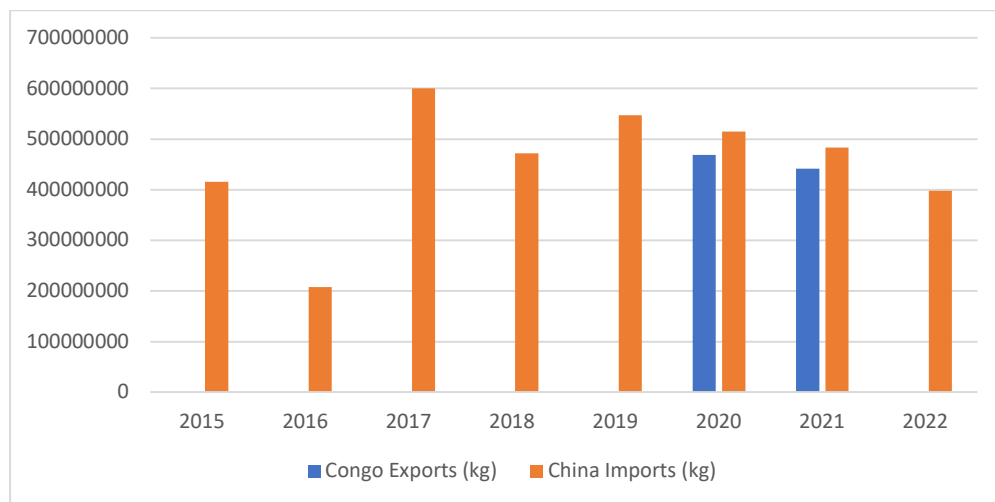


Figure 5. Reported Congolese Exports and Chinese Imports by weight (kg)

HS Codes

A pie / donut chart.

- Proportion of HS Codes reported by an individual country.
- Ability to toggle between viewing the data:
 - By CIF Value (USD)
 - By FOB Value (USD)
 - By Volume (m³)
 - By Weight (kg)

Global map

A map.

- Displays selected countries with a visualisation of the reported volumes/weights/values, e.g. by light/dark coloring or by a large/small circle.
- Ability to filter data on other charts by clicking on the map.

Other Functionality

Timber-related trade quotas and restrictions

- Text-based (and/or map-based) information about timber-related trade quotas and restrictions relating to the selected/filtered countries and commodities, as per:
 - Timber trade quotas and restrictions related to Cameroon, Rep. of Congo and Viet Nam from the [Forest Product Export Restrictions \(FPERs\) database](#)
 - CITES related listings, quotas and suspension/restrictions from [Species+](#)

NB: TRAFFIC has compiled some of the above information into Excel format.

Other potential functionality

- The creation of “alerts”, i.e. a notification or an email sent to a user when a certain level of discrepancy between certain countries is reached. The level of discrepancy and the applicable countries will be determined by the user.
- The ability to export data, either in a tabular format (for the raw data) or as image files (for the chart visualisations). The export should be filtered to the relevant data selected/filtered by the user on their dashboard.
- The ability to save searches, views, etc.

Annex 1

All two-, four- and six-digit HS codes starting with 44

(Wood and articles of wood; wood charcoal)

HS code	Description
44	Wood and articles of wood; wood charcoal
4401	Fuel wood, in logs, billets, twigs, faggots or similar forms; wood in chip or particles; sawdust and wood waste and scrap, whether or not agglomerated in logs, briquettes, pellets or similar forms
440111	Wood; for fuel, in logs, in billets, in twigs, in faggots or similar forms, whether or not agglomerated, coniferous
440112	Wood; for fuel, in logs, in billets, in twigs, in faggots or similar forms, whether or not agglomerated, non-coniferous
440121	Wood; for fuel, in chips or particles, coniferous, whether or not agglomerated
440122	Wood; for fuel, in chips or particles, non-coniferous, whether or not agglomerated
440131	Wood; for fuel, sawdust and wood waste and scrap, agglomerated in wood pellets
440132	Wood; for fuel, sawdust and wood waste and scrap, agglomerated in wood briquettes
440139	Wood; for fuel, sawdust and wood waste and scrap, agglomerated in logs or similar forms, other than wood pellets or wood briquettes
440141	Wood; for fuel, sawdust and wood waste and scrap, not agglomerated; sawdust
440149	Wood; for fuel, sawdust and wood waste and scrap, not agglomerated and not including sawdust
4402	Wood charcoal (including shell or nut charcoal), whether or not agglomerated
440210	Wood; charcoal of bamboo, whether or not agglomerated
440220	Wood; charcoal of nut or shell, whether or not agglomerated
440290	Wood; charcoal of wood other than bamboo, nut or shell, whether or not agglomerated
4403	Wood in the rough, whether or not stripped of bark or sapwood, or roughly squared
440311	Wood; coniferous species, in the rough, whether or not stripped of bark or sapwood, or roughly squared; treated with paint, stains, creosote or other preservatives
440312	Wood; non-coniferous species, in the rough, whether or not stripped of bark or sapwood, or roughly squared; treated with paint, stains, creosote or other preservatives
440321	Wood; coniferous species, of pine (Pinus spp.), in the rough, whether or not stripped of bark or sapwood, or roughly squared, untreated, of which the smallest cross-sectional dimension is 15 cm or more
440322	Wood; coniferous species, of pine (Pinus spp.), in the rough, whether or not stripped of bark or sapwood, or roughly squared, untreated, of which any cross-sectional dimension is less than 15 cm
440323	Wood; coniferous species, of fir (Abies spp.) and spruce (Picea spp.), in the rough, whether or not stripped of bark or sapwood, or roughly squared, untreated, of which the smallest cross-sectional dimension is 15 cm or more
440324	Wood; coniferous species, of fir (Abies spp.) and spruce (Picea spp.), in the rough, whether or not stripped of bark or sapwood, or roughly squared, untreated, of which any cross-sectional dimension is less than 15 cm
440325	Wood; coniferous species n.e.c. in headings 4403.21 or 4403.23, in the rough, whether or not stripped of bark or sapwood, or roughly squared, untreated, of which the smallest cross-sectional dimension is 15 cm or more
440326	Wood; coniferous species n.e.c. in headings 4403.22 or 4403.24, in the rough, whether or not stripped of bark or sapwood, or roughly squared, untreated, of which any cross-sectional dimension is less than 15 cm
440341	Wood, tropical; as specified in Subheading Note 2 to this Chapter, dark red meranti, light red meranti and meranti bakau, in the rough, whether or not stripped of bark or sapwood, or roughly squared, untreated
440342	Wood, tropical; teak, in the rough, whether or not stripped of bark or sapwood, or roughly squared, untreated
440349	Wood, tropical; other than dark red meranti, light red meranti meranti bakau and teak, in the rough, whether or not stripped of bark or sapwood, or roughly squared, untreated
440391	Wood; oak, in the rough, whether or not stripped of bark or sapwood, or roughly squared, untreated

440393	Wood; of beech (<i>Fagus</i> spp.), in the rough, whether or not stripped of bark or sapwood, or roughly squared, untreated, of which the smallest cross-sectional dimension is 15 cm or more
440394	Wood; of beech (<i>Fagus</i> spp.), in the rough, whether or not stripped of bark or sapwood, or roughly squared, untreated, of which any cross-sectional dimension is less than 15 cm
440395	Wood; of birch (<i>Betula</i> spp.), in the rough, whether or not stripped of bark or sapwood, or roughly squared, untreated, of which the smallest cross-sectional dimension is 15 cm or more
440396	Wood; of birch (<i>Betula</i> spp.), in the rough, whether or not stripped of bark or sapwood, or roughly squared, untreated, of which any cross-sectional dimension is less than 15 cm
440397	Wood; of poplar and aspen (<i>Populus</i> spp.), in the rough, whether or not stripped of bark or sapwood, or roughly squared, untreated
440398	Wood; of eucalyptus (<i>Eucalyptus</i> spp.), in the rough, whether or not stripped of bark or sapwood, or roughly squared, untreated
440399	Wood; in the rough, whether or not stripped of bark or sapwood, or roughly squared, untreated, n.e.c. in heading no. 4403
4404	Hoopwood; split poles; piles, pickets, stakes of wood, pointed, not sawn lengthwise; wooden sticks, roughly trimmed, not turned, bent, etc., suitable for walking sticks, umbrellas, tool handles, etc.
440410	Wood; coniferous, split poles, piles, pickets, stakes, pointed but not sawn lengthwise; sticks for umbrellas, tool handles etc, roughly trimmed but not turned or bent; chipwood etc, hoopwood
440420	Wood; non-coniferous, split poles, piles, pickets, stakes, pointed but not sawn lengthwise; sticks for umbrellas, tool handles etc, roughly trimmed but not turned or bent; chipwood etc, hoopwood
4405	Wood wool; wood flour
440500	Wood; wood wool and wood flour
4406	Railway or tramway sleepers (cross-ties) of wood
440611	Wood; railway or tramway sleepers (cross-ties), not impregnated, coniferous
440612	Wood; railway or tramway sleepers (cross-ties), not impregnated, non-coniferous
440691	Wood; railway or tramway sleepers (cross-ties), impregnated, coniferous
440692	Wood; railway or tramway sleepers (cross-ties), impregnated, non-coniferous
4407	Wood sawn or chipped lengthwise, sliced or peeled, whether or not planed, sanded or finger-jointed, of a thickness exceeding 6mm
440711	Wood; coniferous species, of pine (<i>Pinus</i> spp.), sawn or chipped lengthwise, sliced or peeled, whether or not planed, sanded or finger-jointed, of a thickness exceeding 6mm
440712	Wood; coniferous species, of fir (<i>Abies</i> spp.) and spruce (<i>Picea</i> spp.), sawn or chipped lengthwise, sliced or peeled, whether or not planed, sanded or finger-jointed, of a thickness exceeding 6mm
440713	Wood; coniferous species, of S-P-F (spruce (<i>Picea</i> spp.), pine (<i>Pinus</i> spp.) and fir (<i>Abies</i> spp.)), sawn or chipped lengthwise, sliced or peeled, whether or not planed, sanded or finger-jointed, of a thickness exceeding 6mm
440714	Wood; coniferous species, of Hem-fir (western hemlock (<i>Tsuga heterophylla</i>) and fir (<i>Abies</i> spp.))
440719	Wood; coniferous species, other than of pine (<i>Pinus</i> spp.) or fir (<i>Abies</i> spp.) or spruce (<i>Picea</i> spp.), sawn or chipped lengthwise, sliced or peeled, whether or not planed, sanded or finger-jointed, of a thickness exceeding 6mm
440721	Wood, tropical; as specified in Subheading Note 2 to this Chapter, mahogany (<i>Swietenia</i> spp.), sawn or chipped lengthwise, sliced or peeled, whether or not planed, sanded or finger-jointed, thicker than 6mm
440722	Wood, tropical; virola, imbuia and balsa, sawn or chipped lengthwise, sliced or peeled, whether or not planed, sanded or finger-jointed, thicker than 6mm
440723	Wood, tropical; teak, sawn or chipped lengthwise, sliced or peeled, planed, square dressed, structural, thicker than 6mm
440725	Wood, tropical; dark red meranti, light red meranti and meranti bakau, sawn or chipped lengthwise, sliced or peeled, whether or not planed, sanded or finger-jointed, thicker than 6mm
440726	Wood, tropical; white lauan, white meranti, white seraya, yellow meranti and alan, sawn or chipped lengthwise, sliced or peeled, whether or not planed, sanded or finger-jointed, thicker than 6mm
440727	Wood, tropical; sapelli, sawn or chipped lengthwise, sliced or peeled, whether or not planed, sanded or finger-jointed, thicker than 6mm
440728	Wood, tropical; iroko, sawn or chipped lengthwise, sliced or peeled, whether or not planed, sanded or finger-jointed, thicker than 6mm
440729	Wood, tropical, n.e.c. in item no. 4407.2, sawn or chipped lengthwise, sliced or peeled, whether or not planed, sanded or finger-jointed, of a thickness exceeding 6mm
440791	Wood; oak (<i>Quercus</i> spp.), sawn or chipped lengthwise, sliced or peeled, whether or not planed, sanded or finger-jointed, thicker than 6mm

440792	Wood; beech (<i>Fagus</i> spp.), sawn or chipped lengthwise, sliced or peeled, whether or not planed, sanded or finger-jointed, thicker than 6mm
440793	Wood; maple (<i>Acer</i> spp.), sawn or chipped lengthwise, sliced or peeled, whether or not planed, sanded or finger-jointed, thicker than 6mm
440794	Wood; cherry (<i>Prunus</i> spp.), sawn or chipped lengthwise, sliced or peeled, whether or not planed, sanded or finger-jointed, thicker than 6mm
440795	Wood; ash (<i>Fraxinus</i> spp.), sawn or chipped lengthwise, sliced or peeled, whether or not planed, sanded or finger-jointed, thicker than 6mm
440796	Wood; of birch (<i>Betula</i> spp.), sawn or chipped lengthwise, sliced or peeled, of a thickness exceeding 6mm, whether or not planed, sanded or finger-jointed
440797	Wood; of poplar and aspen (<i>Populus</i> spp.), sawn or chipped lengthwise, sliced or peeled, of a thickness exceeding 6mm, whether or not planed, sanded or finger-jointed
440799	Wood; sawn or chipped lengthwise, sliced or peeled, of a thickness exceeding 6mm, whether or not planed, sanded or finger-jointed, n.e.c. in heading no. 4407
4408	Sheets for veneering (including those obtained by slicing laminated wood), for plywood or for similar laminated wood and other wood, sawn lengthwise, sliced or peeled, planed or not, sanded, spliced or end-jointed, of a thickness not exceeding 6 mm
440810	Wood; coniferous, sheets for veneering (including those obtained by slicing laminated wood), for plywood or similar laminated wood and other wood, sawn lengthwise, sliced or peeled, planed or not, sanded, spliced or end-jointed, not over 6 mm thick
440831	Wood, tropical; as specified in Subheading Note 2 to this Chapter, dark red meranti, light red meranti, meranti bakau, sheets for veneer, plywood or other wood, sawn lengthwise, sliced or peeled, planed or not, sanded or end-jointed, not thicker than 6mm
440839	Wood, of tropical wood; as in Subheading note 2 to this Chapter, n.e.c. in heading no. 4408.31, sheets for veneer or plywood, other wood sawn length wise, sliced or peeled, whether or not planed, sanded or end-jointed, not thicker than 6mm
440890	Wood; n.e.c. in heading no. 4408, sheets for veneer or plywood, other wood sawn lengthwise, sliced or peeled, whether or not planed, sanded or end-jointed, not exceeding 6mm in thickness
4409	Wood (including strips, friezes for parquet flooring, not assembled), continuously shaped (tongued, grooved, v-jointed, beaded or the like) along any edges, ends or faces, whether or not planed, sanded or end-jointed
440910	Wood; coniferous (including unassembled strips and friezes for parquet flooring), continuously shaped along any edges, ends or faces, whether or not planed, sanded or end-jointed
440921	Wood; bamboo (including unassembled strips and friezes for parquet flooring), continuously shaped along any edges, ends or faces, whether or not planed, sanded or end-jointed
440922	Wood; tropical (including unassembled strips and friezes for parquet flooring), continuously shaped along any edges, ends or faces, whether or not planed, sanded or end-jointed
440929	Wood; non-coniferous, other than bamboo or tropical wood, (including unassembled strips and friezes for parquet flooring), continuously shaped along any edges, ends or faces, whether or not planed, sanded or end-jointed
4410	Particle board, oriented strand board (OSB) and similar board (e.g. waferboard) of wood or other ligneous materials, whether or not agglomerated with resins or other organic binding substances
441011	Particle board of wood, whether or not agglomerated with resins or other organic binding substances
441012	Oriented strand board (OSB) of wood, whether or not agglomerated with resins or other organic binding substances
441019	Wafer board and similar board of wood n.e.c. in item no. 4410.1, whether or not agglomerated with resins or other organic binding substances
441090	Particle board, oriented strand board (OSB) and similar board of ligneous materials other than wood, whether or not agglomerated with resins or other organic binding substances
4411	Fibreboard of wood or other ligneous materials, whether or not bonded with resins or other organic substances
441112	Medium density fibreboard (MDF), of a thickness not exceeding 5 mm
441113	Medium density fibreboard (MDF), of a thickness exceeding 5 mm but not exceeding 9 mm
441114	Medium density fibreboard (MDF), of a thickness exceeding 9 mm
441192	Fibreboard (other than MDF) of a density exceeding 0.8g/cm ³ , of wood or other ligneous materials, bonded or not with resins or other organic substances
441193	Fibreboard (other than MDF) of a density exceeding 0.5g/cm ³ but not 0.8g/cm ³ , of wood or other ligneous materials, bonded or not with resins or other organic substances
441194	Fibreboard (other than MDF) of a density not exceeding 0.5g/cm ³ , of wood or other ligneous materials, bonded or not with resins or other organic substances

4412	Plywood, veneered panels and similar laminated wood
441210	Plywood, veneered panels and similar laminated wood; of bamboo
441231	Plywood; consisting only of sheets of wood (not bamboo), each ply 6mm or thinner, with at least one outer ply of tropical wood
441233	Plywood; with sheets of wood only; not bamboo; each ply 6mm or less, with at least one outer ply of alder, ash, beech, birch, cherry, chestnut, elm, eucalyptus, hickory, horse chestnut, lime, maple, oak, plane, poplar, aspen, robinia, tulipwood or walnut
441234	Plywood; consisting only of sheets of wood (not bamboo), each ply 6mm or thinner, with at least one outer ply of non-coniferous wood not listed in subheading 4412.33
441239	Plywood; consisting only of sheets of wood (not bamboo), each ply 6mm or thinner, with both outer plies of coniferous wood
441241	Plywood, veneered panels and similar laminated wood; laminated veneered lumber (LVL); with at least one outer ply of tropical wood
441242	Laminated veneered lumber (LVL); with at least one outer ply of non-coniferous wood
441249	Laminated veneered lumber (LVL); with both outer plies of coniferous wood
441251	Blockboard, laminboard and battenboard; with at least one outer layer of tropical wood
441252	Blockboard, laminboard and battenboard; with at least one outer ply of non-coniferous wood, (not containing particle board)
441259	Blockboard, laminboard and battenboard; with both outer plies of coniferous wood
441291	Plywood; n.e.c. in heading 4412, with at least one outer ply of tropical wood
441292	Plywood; n.e.c. in heading 4412, with at least one outer ply of non-coniferous wood
441299	Plywood; n.e.c. in heading 4412, with both outer plies of coniferous wood
4413	Densified wood, in blocks, plates, strips or profile shapes
441300	Wood; densified wood, in blocks, plates, strips or profile shapes
4414	Wooden frames; for paintings, photographs, mirrors or similar objects
441410	Wooden frames; for paintings, photographs, mirrors or similar objects; of tropical wood
441490	Wooden frames; for paintings, photographs, mirrors or similar objects; not of tropical wood
4415	Packing cases, boxes, crates, drums and similar packings, of wood; cable-drums of wood; pallets, box pallets and other load boards, of wood; pallet collars of wood
441510	Wood; cases, boxes, crates, drums, similar packings and cable-drums
441520	Wood; pallets, box pallets and other load boards; pallet collars
4416	Casks, barrels, vats, tubs and other coopers' products and parts thereof, of wood, including staves
441600	Wood; casks, barrels, vats, tubs and other coopers' products and parts thereof, of wood, including staves
4417	Tools, tool bodies, tool handles, broom or brush bodies and handles, of wood; boot or shoe lasts and trees, of wood
441700	Wood; tools, tool bodies, tool handles, broom or brush bodies and handles, boot and shoe lasts and trees, of wood
4418	Builders' joinery and carpentry of wood, including cellular wood panels, assembled flooring panels, shingles and shakes
441811	Wood; windows, French-windows and their frames; of tropical wood
441819	Wood; windows, French-windows and their frames; (of other than tropical wood)
441821	Wood; doors and their frames and thresholds, of tropical wood;
441829	Wood; doors and their frames and thresholds, (of other than tropical wood)
441830	wood; posts and beams other than products of subheadings 4418.81 to 4418.89
441840	Wood; shuttering for concrete constructional work
441850	Wood; shingles and shakes
441873	Wood; assembled flooring panels, of bamboo or with at least the top layer (wear layer) of bamboo
441874	Wood; assembled flooring panels, not of bamboo or with at least the top layer (wear layer) of bamboo, for mosaic floors
441875	Wood; assembled flooring panels, not of bamboo or with at least the top layer (wear layer) of bamboo, multilayer
441879	Wood; assembled flooring panels, n.e.c in headings 4418.73, 4418.74 or 4418.75

441881	Wood; engineered structural timber products, glue-laminated timber (glulam)
441882	Wood; engineered structural timber products, cross-laminated timber (CLT or X-lam)
441883	Wood; engineered structural timber products, I beams
441889	Wood; engineered structural timber products, other than glue-laminated timber (glulam), cross-laminated timber (CLT or X-lam), or I beams
441891	Wood; builders' joinery and carpentry of wood n.e.c. in heading no. 4418, of bamboo
441892	Wood; builders' joinery and carpentry of wood n.e.c. in heading no. 4418, cellular wood panels
441899	Wood; builders' joinery and carpentry of wood n.e.c. in heading no. 4418, other than of bamboo or cellular wood panels
4419	Tableware and kitchenware, of wood
441911	Tableware and kitchenware, of wood; of bamboo, bread boards, chopping boards and similar boards
441912	Tableware and kitchenware, of wood; of bamboo, chopsticks
441919	Tableware and kitchenware, of wood; of bamboo, n.e.c. in heading 4419
441920	Tableware and kitchenware, of wood; of tropical wood
441990	Tableware and kitchenware, of wood; not of bamboo or tropical wood
4420	Wood marquetry and inlaid wood; caskets and cases for jewellery or cutlery, and similar articles of wood; statuettes and other ornaments of wood; wooden articles of furniture not falling in chapter 94
442011	Wood; statuettes and other ornaments, of tropical wood
442019	Wood; statuettes and other ornaments, of other than tropical wood
442090	Wood; marquetry and inlaid wood, caskets and cases for jewellery or cutlery and similar articles of wood, wooden articles of furniture not falling in chapter 94
4421	Wooden articles n.e.c. in heading no. 4414 to 4420
442110	Wood; clothes hangers
442120	Wood; coffins
442191	Wood; of bamboo, articles n.e.c. in heading no. 4414 to 4420 (excluding clothes hangers)
442199	Wood; not of bamboo, articles n.e.c. in heading no. 4414 to 4420 (excluding clothes hangers)